

SIL-ICON

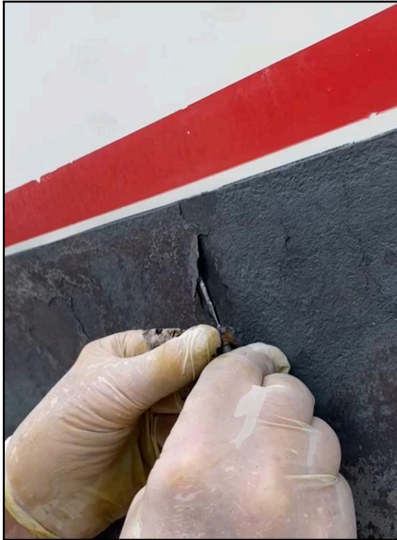
Information: W: aaci.au E: sales@aaci.au

A: 1/32 Aquarium Ave. Hemmant. Q4174 P: +61444568646

Sil-iCon uses the latest technology in foul release and consists of applying two coats of BASE COAT/ETCH PRIMER and two coats of CLEAR COAT Silicone (over the ETCH PRIMER/BASE COAT) - Sil-iCon is available in 10 colours, including the standard white colour.

PREPARATION:

New hull, shafts, props, rudders, etc.: all surfaces need to be sanded to an 80-grit finish. In old hulls (previously antifouled), remove flaky Anti-Foul and sand with 80 grit back to firm antifoul..

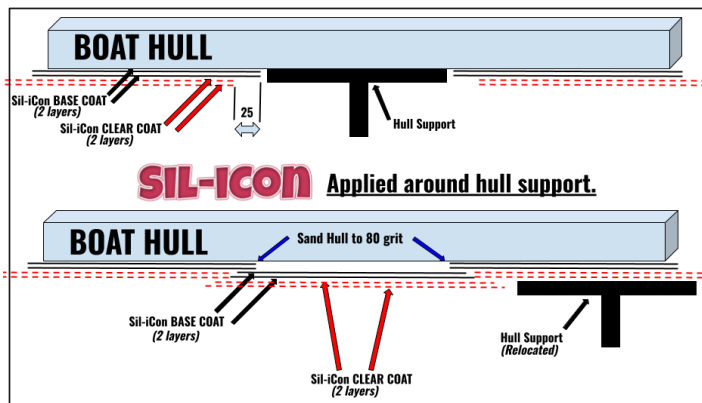


If old silicone needs to be removed? Use Silicone remover. Once completed, dust the surface and wipe it down with Acetone or a similar solvent.

Make sure the surface is dry before applying the Sil-iCon BASE COAT (Parts A & B mixed). All surfaces can be painted using a fine disposable brush, or rolled with a 9mm high-density foam roller, making sure there are no missed areas, drips or runs in the coating. Leave to tack off (about 30 minutes, depending on temperature).

Apply a second coat of Sil-iCon BASE COAT to all the surfaces being treated.

This next step is IMPORTANT and CRITICAL!! Do not let this second coat of Sil-iCon BASE COAT cure, but instead, as soon as it has become tacky or sticky to the touch (it may take between 15 mins in summer to 1 hour in winter for this tacky surface - this step is critical for the next layer of Sil-iCon CLEAR COATING to adhere to it). When the tacky surface is achieved, immediately apply Sil-iCon CLEAR COAT using a brush or roller. Make sure that there are no missed areas, runs or drips in the coating. Leave the Sil-iCon CLEAR COAT to dry (usually within 30 mins), and then apply a second (and final) coat of Sil-iCon CLEAR COAT. Allow at least 8 hours before launching.



When applying Sil-iCon around hull supports while the boat is on the hardstand: Prepare the hull in the normal way as above, sanding as close as is possible to the hull support. Apply both layers of Sil-iCon BASE COAT as close as possible to support as per the steps above. For the first and second layers of Sil-iCon CLEAR COAT, keep them back from the edge of the hull support by about 25mm. Once the Sil-iCon system has hardened, relocate the hull supports and now sand the hull where the supports were and apply the first and second layers of Sil-iCon BASE COAT to the untreated hull, overlapping the Sil-iCon BASE COAT of previously coats, right up to the previous layers of Sil-iCon CLEAR COAT. Let tack off and then apply the Sil-iCon

CLEAR COAT in the normal layers and overlap the earlier Sil-iCon CLEAR COAT application prior to the hull support relocation..

